

SUPERIDE AIR SUSPENSIONS

AIR COMPRESSOR AND ELECTRICAL CIRCUIT KITS

Completely Assembled and Ready for Installation

The Superide 12 Volt DC Air and Electrical Circuit Kits are unitized and completely pre-assembled for ease of installation. (Installation time can be cut by over 50% when compared with installing loose components.)

These unitized modules offer several mounting options. The air compressor module can be mounted alongside or on top of the air reservoir tank. Or the two assemblies can be mounted separately.

Each air system has been engineered for top perfor-

mance. Only the best quality components have been selected for use in the modular assemblies.

It's important to carefully evaluate the operating integrity of an on-board 12 V DC air system. Whether it's used to operate an air suspension or other air powered accessories: remember, the air components are the "heart" of any air operated system. When evaluating air systems, compare the Superide system — feature for feature.

1 ■ AIR COMPRESSORS.

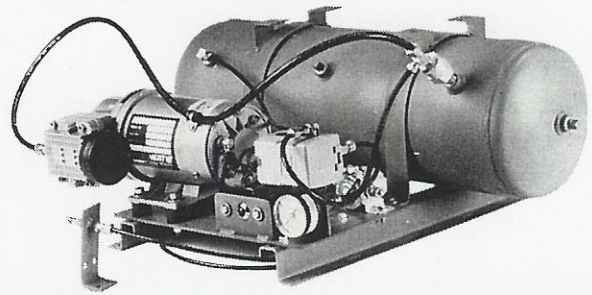
Thomas Industries 12volt DC compressor delivers 0.95 CFM @ 100psig. Class H insulation and 1/4 NPT discharge port.

2 ■ VIBRATION MOUNTS.

Sturdy rubber isolators or vibration mounts supporting the compressor are essential: they reduce motor vibration and dampen annoying sound.

3 ■ OPERATING LIGHT.

On a 12 V DC air system, it is important to know when the air compressor is operating and for what duration. The compressor operating light will alert a driver to abnormal operating intervals in the event that there is a malfunction or that the system is leaking air and requires service.



4 ■ AIR PRESSURE GAUGE.

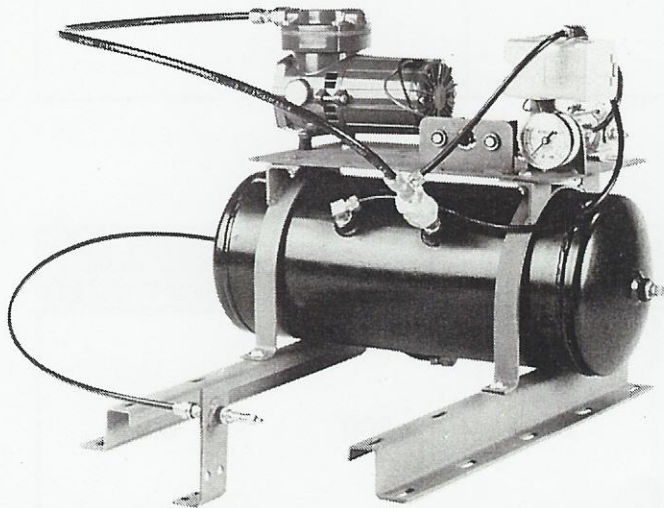
The ability to measure pressure in the reservoir tank is important for two reasons. Air powered accessories, operating from reserve pressure in the tank, have specific pressure requirements. It's important to know the amount of air you have available. It's also important to have the ability to confirm, and adjust if necessary, the setting on the automatic pressure switch. In order to properly set the switch, you must have an air gauge.

5 ■ AIR TANK DRAIN VALVE.

In order to make draining moisture and condensates from the air tank convenient, a drain valve and mounting bracket assembly are supplied with the kit. The valve can be easily installed in a location, like a side compartment, that will permit easy access. Too often, draining an air tank requires crawling under a vehicle. Because regular service is important, convenient access to the drain valve will facilitate maintenance of the system.

6 ■ PRE-WIRED ELECTRICAL CIRCUIT.

A common cause of failure in 12 V DC air systems is a poorly designed electrical circuit. This pre-assembled kit guarantees the correct gauge of wire, ring-type electrical connectors, welded ground connections, and properly mated circuit breakers. To complete the electrical circuit, two terminals are clearly marked for easy hookup. And, ample 8 gauge wire is supplied for the battery "hot" connection.



PRODUCT DATA SHEET



Superide Air Suspensions

American Carrier System
2750 S East Ave Fresno ca 93706
559-441-1460

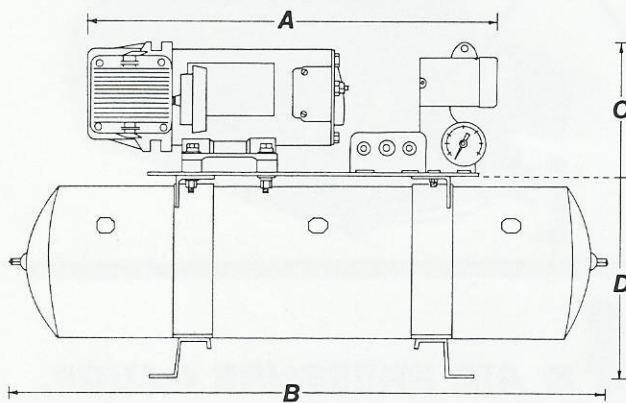
VEHICLE APPLICATIONS

Scale Weight (Rear Axle)	Superide Air Suspensions	Air Compressor Kit No.*	Air Compressor	Air Tank
8,000-23,000 Lbs.	Series 800	8700-163	1/3 HP	1300 CU. IN.

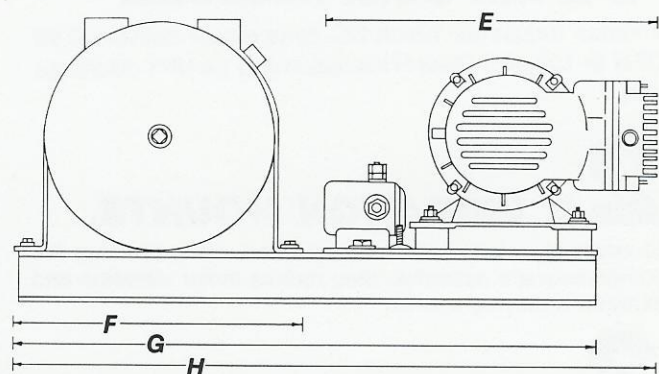
*Refer to Installation Instructions and Drawing No. 8700-164 / Air and Electrical Circuit Schematic.

DIMENSIONS

Side View / Top Mounted



End View / Side Mounted



Air Compressor Kit	Length		Height		Width			
	A	B	C	D	E	F	G	H
8700-163	20"	29"	11"	11"	12"	11"	19"	24"

SPECIFICATIONS

Air Compressors: 12 V DC Oil-less Single Cylinder					
Kit No.*	HP	RPM	Load Amps.	Max PSI	SCFM / 100 PSI
8700-163	1/3	1800	28	100	0.95

*Individual components are subject to change without notice at the discretion of the manufacturer.

Revised: August 1999